



**1117RX Series -
8 & 16 Zone Wireless 868MHz Radio
Duress/Panic Alarm System
For
Bank Santander Branches**



Installation & User Manual

1117RX System Equipment:

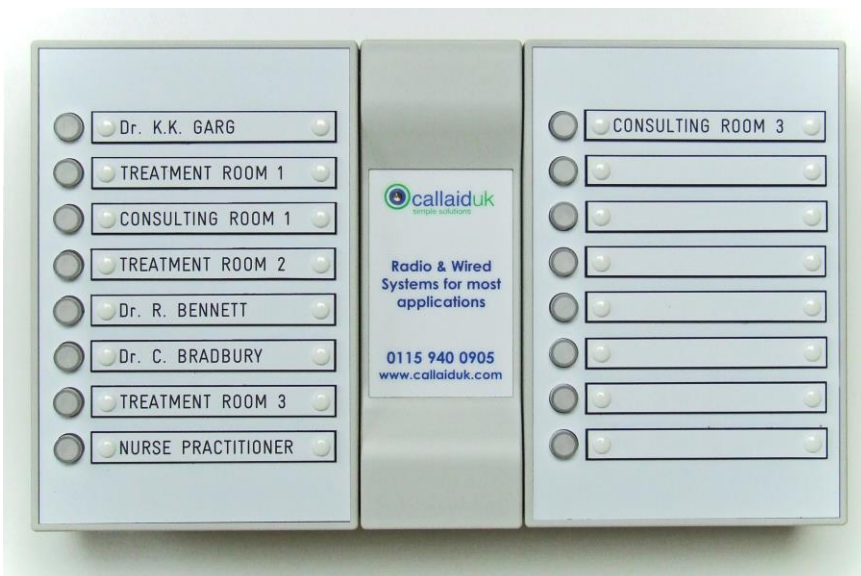
1117RX – Wall Mounted 8 Zone 868MHz Radio Master Display Panel
(with standard 1 to 8 engraved numbers)

Our part number - A4306



1117RX – Wall mounted 16 Zone 868MHz Radio Master Display Panel
(Unit shown is with optional engraved name inserts. Standard unit is engraved 1 to 16)

Our part number - A5440



1150 - Under desk mounted 868MHz Radio Panic Button (Powered by a CR123A battery and benefits from low battery alert software)

Our part number - A5331



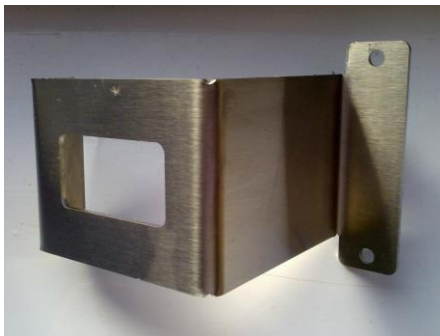
1117RX 12 Volt Power supply unit

Our part number - A3684



Stainless steel security clamp for power supply unit

Our part number - A5560



The 1117RX Radio Panic Alarm

The panic button will transmit by 868MHz radio frequency to the 1117RX master receiver. The 1117RX master receiver should be installed where support personnel are located.

As standard the 1117RX Series system benefits from:

- **Operating at 868MHz radio frequency.**
- **Battery powered 1150 High profile under desk mounted panic buttons linked by radio to a wall mounted 1117RX master receiver panel.**
- **1117RX panel engraved with panic button numbers 1 to 8 or 1 to 16.**
- **Panic button 'low battery' notification.**
- **Alerts to be 'cancelled at panel'.**

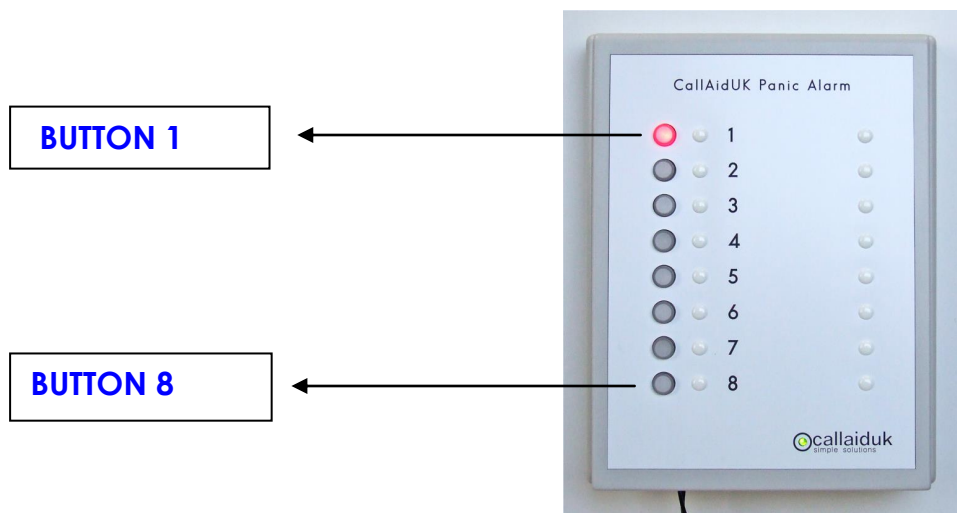
System Overview

When an 1150 call unit is activated an alarm will sound at the 1117RX master panel. A red lamp will be illuminated next to the panic button number, and a strident tone emitted.

The alert is then cancelled at the 1117RX master panel.

To get the best from this system:

The call/panic buttons are coded with different numbers 1 to 8 or 1 to 16 (as shown below) this will allow each call/panic button to call to a different position on the 1117RX receiver. The panic button coded as button 1 will call to the top button and so on until panic button 8 will call to the bottom button.



Incoming panic alarms

When there is a panic alarm the appropriate button will be lit (Red) and the sounder will be activated. The location of the call will be identified by the name/number on the adjacent name insert.

Cancel/Reset panic alarms

To cancel/reset the call at the 1117RX panel, please press the illuminated button.

Low Battery warning

When the 1150 panic button battery is getting low and the panic button is pressed a low battery signal will be sent to the receiver. The receiver will then light the corresponding lamp GREEN. Change the battery in the 1150 panic button and then press the panic button; this will cancel the low battery warning.

To adjust the alarm volume on the 1117RX panel

To enter this set-up mode press and hold down buttons 1 & 8 together until all the buttons turn red.

Press button number 2, the second button down from the top.

The buttons that are illuminated RED denote the current volume settings. This is a thermometer style indication as the red lamps light from the bottom up this adds to the volume. Press unlit buttons to increase the volume. The default setting is lamp four for half volume.

To exit this set-up mode press and hold down buttons 1 & 8 together until all the buttons start flashing, this denotes saving the settings.

Fitting the 16 zone 1117RX panel to the wall.

To allow for easy fitting the 16 zone panel is supplied with a clip in wall mounting plate.

There is a lever at the bottom to release the housing from the back plate. Ensure that back plate is mounted the correct way up as indicated by the arrows.

Important:

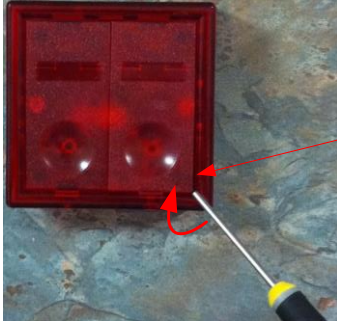
The radio equipment included in this manual is from our standard range of products and from experience will be more than adequate for the average sized commercial building. However, radio signals can be affected by the materials used in the construction of the building and in rare cases some metal equipment fitted within the building. In these cases it may be necessary to install higher powered products or signal repeaters at additional cost. It is advisable to mount the 1117RX at head height.

All radio components should be tested in the location in which they are to operate to ensure they are within range of the receiver.

1150 Radio Panic button



Opening the 1150 Case



To open the case please use a small screw driver inserted at the bottom of the buttons. Now apply a little pressure and ease the buttons out from the bottom.

When the two buttons are removed. Unscrew the two screws and the back box will be separated from the main front plate. The back box can now be screwed into position.

Please note when replacing the front case to the back case do not overtighten the screw as this will hinder the actions of the buttons.

Battery:CR123

When the low battery signal is received at the 1117 RX master the battery will have to be changed to stop the low battery beep

Please ensure that the battery is installed correctly with the + to the + symbol on the PCB.



Setting room numbers



To change the room number that will be transmitted to the Radio Receiver the headers on J1 need to be fitted to the correct position.

The numbers on the right hand side of the headers are binary numbers. To set the correct room number the numbers on the PCB need to be added together. So by putting a jumper link on the numbered headers the appropriate transmit number is selected.

Please note: Unless by previous arrangement, units are shipped from our manufacturing dept. with the header links fitted to one half of a header so that the unit does not have a pre-set number.

Example For room number **6** = header **4 & 2** should have headers fitted.
For room number **7** = header **4 & 2 & 1** should have headers fitted.

Setting system ID

All the equipment fitted on any system must have the same system ID. All units are shipped from our manufacturing dept. with the same System ID. To change the System ID on a transmitter unit the headers on J2 need to be moved. The headers relating to the System ID are marked with S1, S2 and S4 on the right hand side. The numbers are binary numbers and so to get the correct System ID the numbers selected with the jumpers need adding together as described above.

Example: System ID **3** = header **S2** + header **S1**. **If there are no Jumpers on the System ID headers then the default setting is System ID 1**

Installation

Please note: This 1150 radio panic button should be located away from large metal objects as this will reduce the range of the transmitter. Test that the signal is being received before final fixing. Hold the unit in the proposed position and test by putting a call to the radio receiver. Try not to cover the 1150 with the hand as this will adversely affect the range

Low Battery

When the battery is getting low and the panic button is pressed a low battery signal will be sent to the receiver. The receiver will then light the corresponding lamp GREEN. Change the battery in the 1150 panic button and then send a panic to the receiver to cancel the low battery warning.